



Back Office Stock Control

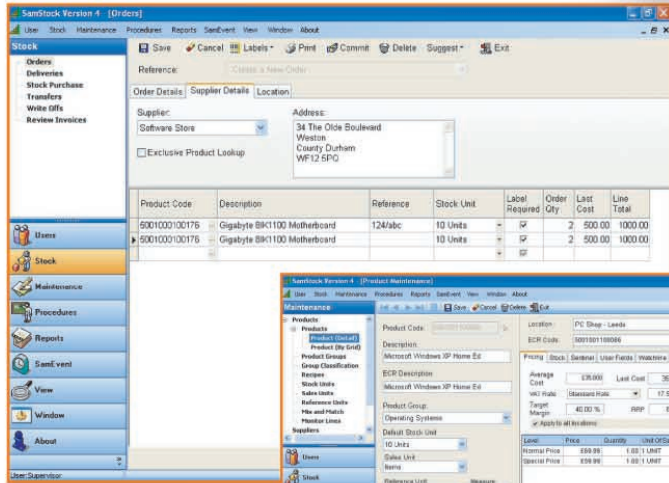
Samstock software is a Back Office Stock Control and Management Information System Samstock is suitable for a single store or multiple branches providing comprehensive reporting for both one location or consolidated branches. Samstock is suitable for both retail and hospitality.

Samstock tracks sales quantities and values for each product sold providing comprehensive and comparative reports. Samstock provides stock control with recommended re-orders, delivery tracking and stock taking with variance reporting.

Samstock can also control maintenance of product files including prices and promotions.



| Product Code | Description | ECR Description | Normal Price | Special Price | Apply to All |
|--------------------------------|---------------------------------|---------------------------------|--------------|---------------|-------------------------------------|
| 5001000100176 | Gigabyte 8K1100 Motherboard | Gigabyte 8K1100 Motherboard | £119.99 | £109.99 | <input checked="" type="checkbox"/> |
| 5001000100186 | Asustek P4P800VM SKT 478 | Asustek P4P800VM SKT 478 | £67.99 | £59.99 | <input checked="" type="checkbox"/> |
| 5001002100196 | Supernico X5DPL-IGM | Supernico X5DPL-IGM | £329.99 | £309.99 | <input checked="" type="checkbox"/> |
| 776655038783 | AMD Graphics Mainboard | AMD Graphics Mainboard | £59.99 | £49.99 | <input checked="" type="checkbox"/> |
| Product Group: Digital Cameras | | | | | |
| Product Group: CD Drives | | | | | |
| 4019976326508 | Iomage CD-RW Drive USB2.0 | Iomage CD-RW Drive USB2.0 | £49.99 | £39.99 | <input checked="" type="checkbox"/> |
| 4021801203946 | Freecom FX-1 EXT CD-RW | Freecom FX-1 EXT CD-RW | £49.99 | £39.99 | <input checked="" type="checkbox"/> |
| 5001014110012 | Internal CDRW Drive | Internal CDRW Drive | £25.99 | £20.99 | <input checked="" type="checkbox"/> |
| | Plextor 52x/24x/52x CD-Rewriter | Plextor 52x/24x/52x CD-Rewriter | £23.99 | £20.99 | <input checked="" type="checkbox"/> |
| | BenQ 48x18x48 CDRW Drive | BenQ 48x18x48 CDRW Drive | £25.99 | £20.99 | <input checked="" type="checkbox"/> |
| | CD Stock | CD Stock | £25.99 | £20.99 | <input checked="" type="checkbox"/> |
| Professional Ed | | | | | |
| | Windows 2000 Professional Ed | Windows 2000 Professional Ed | £109.99 | £99.99 | <input type="checkbox"/> |
| | XP Home Ed | Microsoft Windows XP Home Ed | £69.99 | £59.99 | <input checked="" type="checkbox"/> |
| | ME | Microsoft Windows ME | £49.99 | £39.99 | <input checked="" type="checkbox"/> |
| | XP | Windows XP Upgrade | £79.99 | £69.99 | <input checked="" type="checkbox"/> |



• Purchase Orders, Deliveries and Stocktaking Made Easy.



• Stock Control for Food and Drink with Recipes.



• Manage & Report a List of Comprehensive Promotions.

• Fast, powerful and adaptive to any environment or situation whether it be Retail or Hospitality.



Samstock communicates with various cash registers and Sentinel Touch Screen application software. Samstock automatically collects detailed sales information from the Point of Sale either directly to your back office PC via cable or via modem.

Samstock Communicates with:

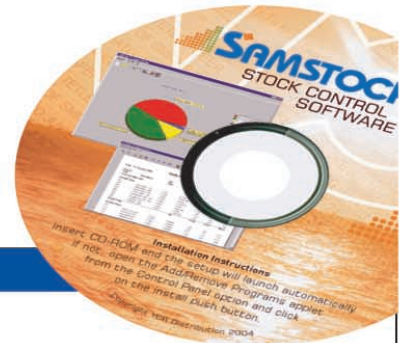
Sam4s

ER-380M, ER-420M, ER-650, ER-5200/15/40M, SER-6500/40, SER-7000/40 and SPS-1000.

Easy2Touch

TS-600

Any Touch Screen Terminal running Sentinel Software.



Samstock V4 Features

Menu Access

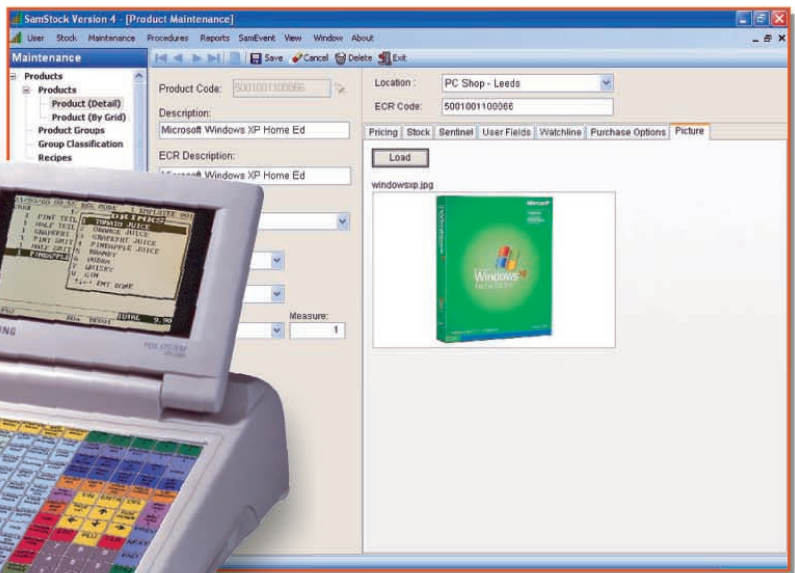
"Windows Feel" icons for screen access, creating a more user friendly interface. Customisable Menu Views, with the ability to remove unwanted icons. Enhanced Product Selection features - allowing selection by custom criteria, ECR Code etc.

Reports

Completely new reporting concept, with "tree view selectors" allow easier report selection, and customisable views. Enhanced report filtering, allowing complete customisable selections of user definable criteria. Separate Classification and Product Group reporting, for easier selection of relevant report data. New Consolidation reporting control for multi location sales analysis. Utilitising the new product picture, it is possible to product a report of product images.

Data Management

A complete new database structure has been introduced using DBISAM a priority Delphi database management system. "Database Transactional Management" has been implemented for improved integrity. The system has an in built record locking system in order to prevent data corruption. Databases of up to 4 gigabyte can be processed using the new structure.



Management of button, product, customer and account images with transmission from PC to terminal.

A New Communications protocol using F(ile) T(ransfer) P(rotocol) for speedier communications across a network has been introduced for the Sentinel Terminal

Easy2Touch

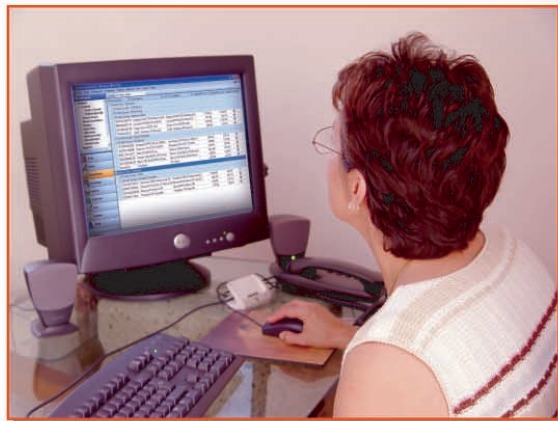
An updated Easy2Touch version with enhanced communications, has been included. Promotion Management has been introduced for the Easy2 Touch terminal, programmable via Samstock.

SPS-1000

Now includes the Sam4s SPS1000 Version 3 which allows the allocation of an image number to product groups for voucher printing at the ECR.

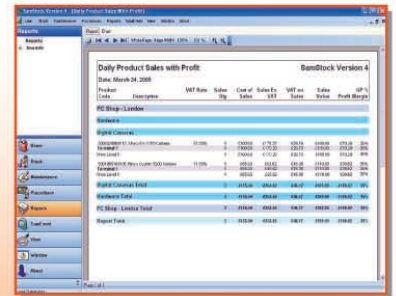
Optional Modules for Samstock

- NISA link for purchase orders by EDI & product update
- Import and Export data
- Integration to Sage Line 50
- Symbol hand held terminal for product creation, deliveries, stock taking etc.

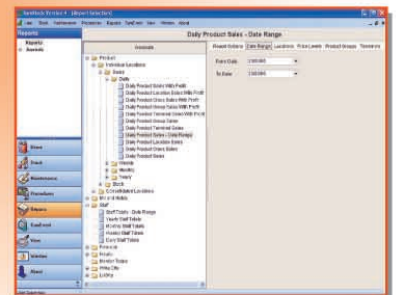


Samstock V.4.0 and Sentinel

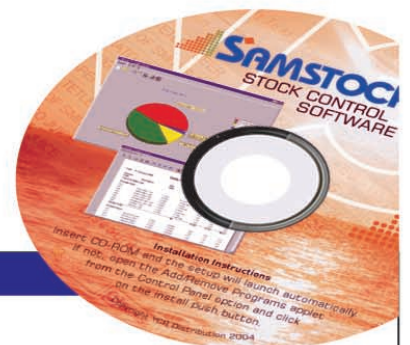
Now with product, financial, hourly, staff sales collection and reporting. Complete Journal collection with user definable view and printing criteria. Program management of essential files, such as questions, condiments, customer, accounts etc. In-built screen designer, for menu management from the back office PC.



- Powerful, Flexible Reports.



- Reports Available by Range and Comparable by Range.



Your Authorised Dealer